

CONTACT INFORMATION

- Website: www.supermicro.com
- General Information: marketing@supermicro.com
- Technical Support: support@supermicro.com
- Phone: +1 (408) 503-8000, Fax: +1 (408) 503-8008

FOR YOUR SYSTEM TO WORK PROPERLY, PLEASE DOWNLOAD APPROPRIATE

DRIVERS/IMAGES/USER'S MANUAL FROM THE LINKS BELOW:

- Manuals: <http://www.supermicro.com/support/manuals>
- Drivers & Utilities: <ftp://ftp.supermicro.com/CDR/Images/CDR-X11-UP/>
- Safety: http://www.supermicro.com/about/policies/safety_information.cfm

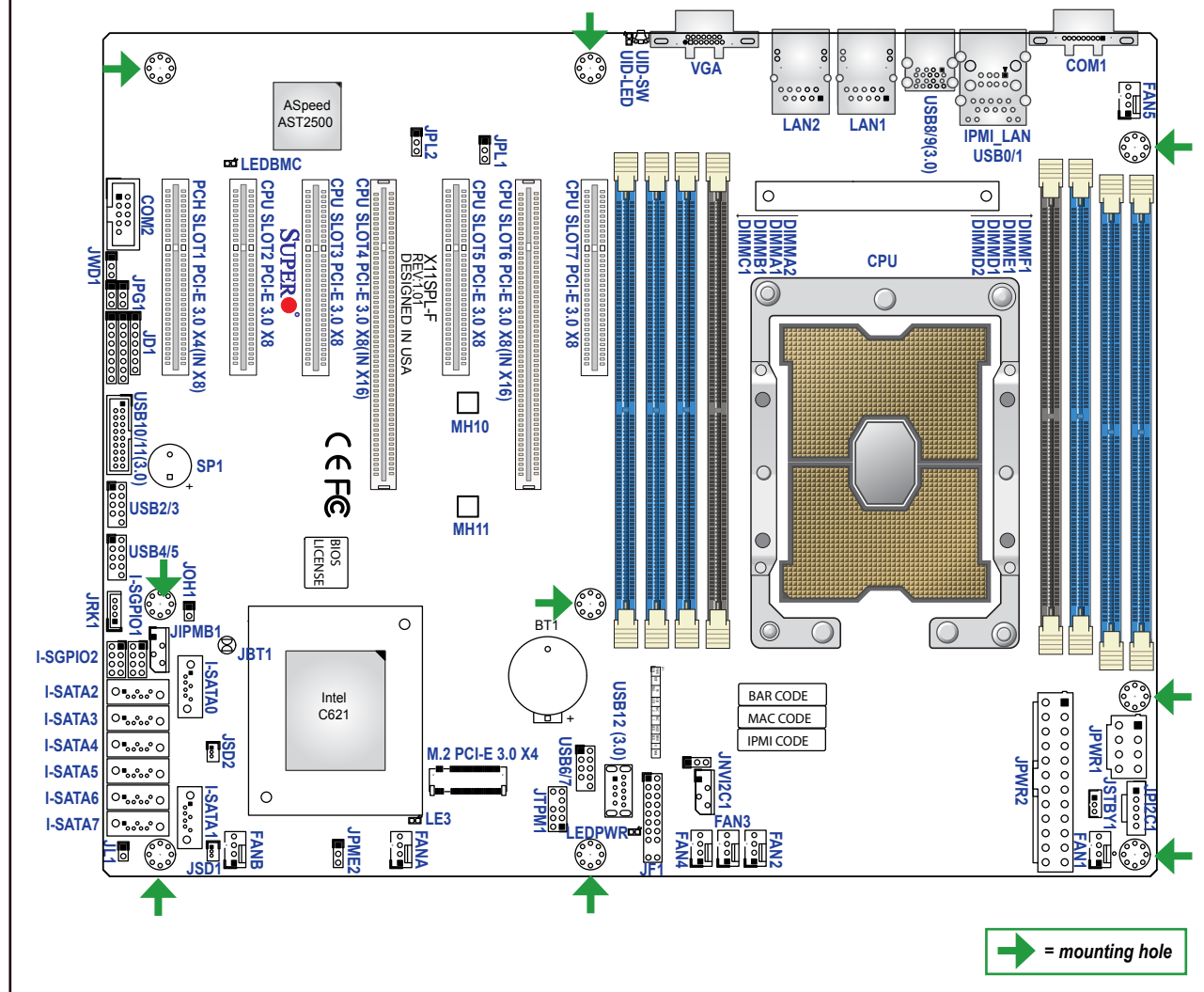
PACKAGE CONTENTS

- One (1) Supermicro Motherboard
- Six (6) SATA Cables
- One (1) I/O Shield
- One (1) Quick Reference Guide



WARNING: This product can expose you to chemicals including lead, known to the State of California to cause cancer and birth defects or other reproductive harm. For more information, go to www.P65Warnings.ca.gov.

Motherboard Layout and Features



→ = mounting hole

Connectors and Jumpers

Connectors	
Connector	Description
BT1	Onboard Battery
COM1, COM2	COM Port, COM Header
FAN1 ~ FAN5, FANA/FANB	CPU/System Fan Headers
IPMI_LAN	Dedicated IPMI LAN Port
I-SATA0 ~ I-SATA7	Intel® PCH SATA 3.0 Ports (with RAID 0, 1, 5, 10)
I-SGPIIO1, I-SGPIIO2	Serial Link General Purpose I/O Connection Headers
JD1	Speaker/Power LED Indicator (Pins 1-3: Power LED, Pins 4-7: Speaker)
JF1	Front Control Panel Header
JIPMB1	4-pin BMC External I²C Header (for an IPMI Card)
JL1	Chassis Intrusion Header
JNVIC1	NVMe I²C Header
JOH1	Overheat LED Indicator
JPI²C1	Power System Management Bus (SMB) I²C Header
JPWR1	8-pin 12V CPU Power Connector
JPWR2	24-pin ATX Power Connector
JRK1	Intel RAID Key Header
JSD1, JSD2	SATA DOM Power Connectors
JSTBY1	Standby Power Header
JTPM1	Trusted Platform Module/Port 80 Connector
LAN1, LAN2	Dual 1G Base-T Ports
M.2	M.2 PCI-E 3.0 x4 or SATA 3.0 Slot (Supports M-Key 2280 and 22110)
MH10, MH11	M.2 Mounting Holes
SLOT1	PCH PCI-E 3.0 x4 (in x8) Slot
SLOT2, SLOT3, SLOT5, SLOT7	CPU PCI-E 3.0 x8 Slot
SLOT4, SLOT6	CPU PCI-E 3.0 x8 (in x16) Slot
SP1	Internal Speaker/Buzzer
UID-SW	Unit Identifier (UID) Switch
USB0/1	Back Panel Universal Serial Bus (USB) 2.0 Ports
USB2/3, USB4/5, USB6/7	Front Accessible USB 2.0 Headers
USB8/9	Back Panel USB 3.0 Ports
USB10/11	Front Accessible USB 3.0 Header
USB12	USB 3.0 Type-A Header
VGA	VGA Port

Jumpers		
Jumper	Description	Default Setting
JBT1	CMOS Clear	Open (Normal)
JPG1	VGA Enable/Disable	Pins 1-2 (Enabled)
JPL1	LAN1 Enable/Disable	Pins 1-2 (Enabled)
JPL2	LAN2 Enable/Disable	Pins 1-2 (Enabled)
JPME2	ME Manufacturing Mode	Pins 1-2 (Normal)
JWD1	Watchdog Timer	Pins 1-2 (Reset)

Note: Refer to Chapter 1 of the User Manual for detailed information on jumpers, connectors, and LED indicators.

LED Indicators

LED Indicators		
LED	Description	Status
LE3	M.2 LED	Blinking Green: Device Working
LEDBMC	BMC Heartbeat LED	Blinking Green: BMC Normal
LEDPWR	Onboard Power LED	Solid Green: Power On
UID-LED	Unit Identifier (UID) LED	Solid Blue: Unit Identified

CPU Support

The X11SPL-F motherboard supports an Intel® Xeon 81xx/61xx/51xx/41xx/31xx series (Socket P0-LGA3647) processor with up to 28 cores and a thermal design power (TDP) of up to 165W.

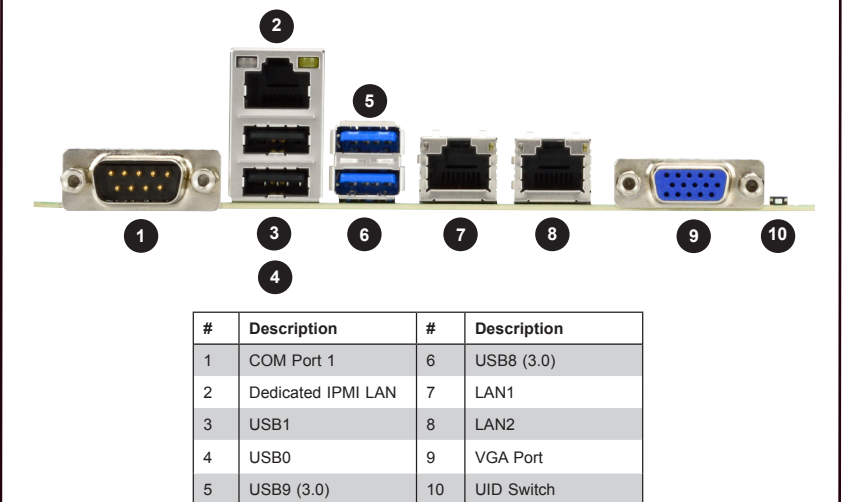
Memory Support

The X11SPL-F supports up to 256GB of RDIMM, 512GB of LRDIMM, and 1TB of 3DS LRDIMM DDR4 (288-pin) ECC memory with speeds of up to 2666MHz in eight memory slots. See below for additional memory information.

- The blue slots must be populated first. Only populate DIMMA2 and DIMMD2 if needed.
- Always use DDR4 memory of the same type, size and speed. Mixed DIMM speeds can be installed. However, all DIMMs will run at the speed of the slowest DIMM.
- The motherboard will support odd-numbered modules (one or three modules installed). However, to achieve the best memory performance, a balanced memory population is recommended.

1 CPU, 8-DIMM Slots	
Number of DIMMs	Memory Population Sequence
1	DIMMA1
2	DIMMA1 / DIMMD1
3	DIMMC1 / DIMMB1 / DIMMA1
4	DIMMB1 / DIMMA1 / DIMMD1 / DIMME1
5	DIMMC1 / DIMMB1 / DIMMA1 / DIMMD1 / DIMME1
6	DIMMC1 / DIMMB1 / DIMMA1 / DIMMD1 / DIMME1 / DIMMF1
7	DIMMC1 / DIMMB1 / DIMMA1 / DIMMA2 / DIMMD1 / DIMME1 / DIMMF1
8	DIMMC1 / DIMMB1 / DIMMA1 / DIMMA2 / DIMMD2 / DIMMD1 / DIMME1 / DIMMF1

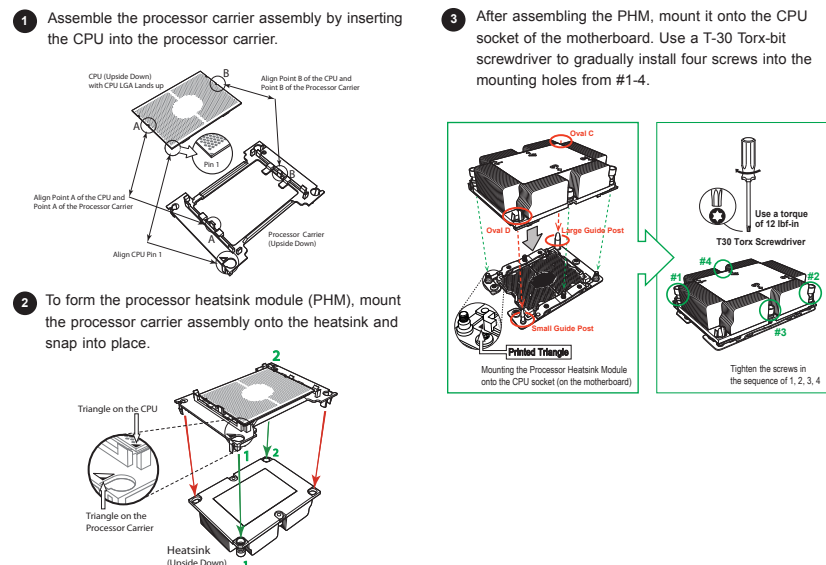
Back Panel I/O Connectors



#	Description	#	Description
1	COM Port 1	6	USB8 (3.0)
2	Dedicated IPMI LAN	7	LAN1
3	USB1	8	LAN2
4	USB0	9	VGA Port
5	USB9 (3.0)	10	UID Switch

Note: Refer to Chapter 2 of the User Manual for detailed information on memory support and CPU/motherboard installation instructions.

CPU and PHM Installation



Note: Graphics shown in this quick reference guide are for illustration only. Your components may or may not look exactly the same as drawings shown in this guide.

Front Control Panel (JF1)

PWR	Power Button	1	Ground
Reset	Reset Button	2	Ground
3.3V			Power Fail LED
UID LED			OH/Fan Fail LED
3.3V Stby			NIC2 Active LED
3.3V Stby			NIC1 Active LED
UID SW			HDD LED
3.3V			PWR LED
X		X	
NMI			Ground
19		20	