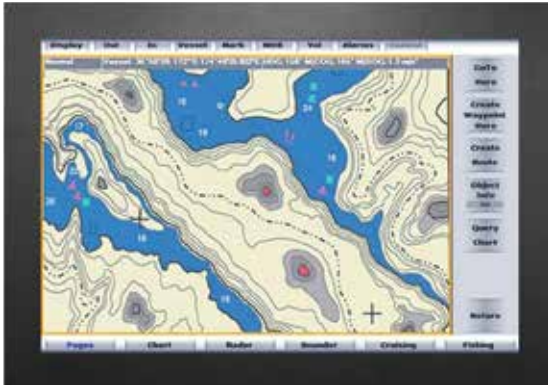


DP-X24-1120

Aluminum front cover



Display Benefits

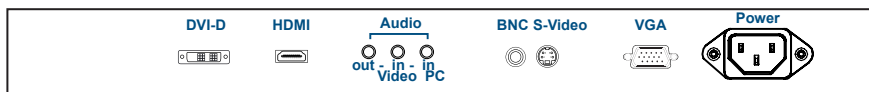
- ▶ 24" widescreen LCD with 1920 x 1200 native **WUXGA** Ultra high resolution
- ▶ Standard with HDMI, DVI-D, VGA, S-Video, BNC & Audio
- ▶ PIP & Picture by Picture viewing efficiency
- ▶ Rugged construction against external impact

Options

- Resistive (single point touch)

FC CE

Basic I/O



Specifications

• LCD Panel

Size (diagonal) :	24.1" Widescreen TFT
Max resolution :	1920 x 1200
Brightness (cd/m2) :	300
Backlight :	LED
Colors :	16.7 M
Contrast ratio (typ) :	1000 : 1
Viewing angle (H/V) :	178° x 178°
Active area (mm) :	518 x 324
MTBF (hrs) :	30,000
Signal input :	HDMI / DVI-D / VGA / S-Video / BNC

• Weight

Net / Gross : 10.4 kgs (22.9 lbs) / 13.9 kgs (30.6 lbs)

• Mounting :

VESA mount

• Environmental

Operating :	0 to 55°C Degree
Storage :	-5 to 60°C Degree
Relative humidity :	5~90%, non-condensing
Shock :	10G acceleration (11 ms duration)
Vibration :	5~500Hz 1G RMS random vibration

• Casing Color :

Black (RAL 9005)

• Regulatory

Safety : FCC & CE certified

• Power

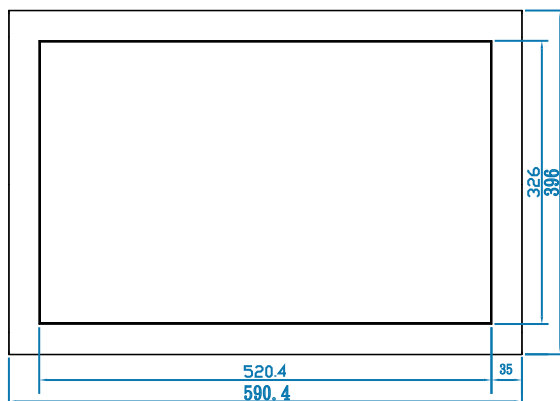
Input :	Auto-sensing 100 to 240VAC, 50 / 60Hz
Consumption :	Max. 48 Watt, Standby 5 Watt

• Dimensions

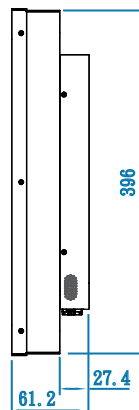
Product :	590.4 x 61.2 x 396 mm / 23.2 x 2.4 x 15.6 inch
Packing :	701 x 121 x 685 mm / 27.6 x 4.8 x 27 inch

Diagrams (mm)

Front View



Side View



Rear View

