

# FHD

# UltraView

## Professional and Versatile LED Monitor

**UltraView** FHD 60Hz Large LED monitor supports 1920 x 1080 resolution, True 10-bit input enables 1.07 billion colors to be presented, achieving ultimate picture quality. Improved energy efficiency and fan-less architecture provides professional-use durability and around-the-clock operation.

F55"



F43"



F32"



F28"



UltraView FHD professional LED is more than just a standalone monitor. UltraView has a variety of embedded modules including HDMI Decoder, HDMI Extender, HDMI Quad display Extender, Multi-Monitor OSD Controller, SDI Input and Portrait Mode Kit. The embedded modules give you the ability of video remote management and transmission for multiple monitors over network.

As a versatile FHD monitor, UltraView FHD professional LED is meticulously designed to meet professional and environmental demands including Sunlight readable brightness, IP54 Front protection, Multi-touch, Anti-reflective/Vandal proof glass, DC power input, Brightness dimming and Mounting kit for VESA-mount, Universal-mount, Overhead tilted wall-mount and Desktop stand.

With over 25 years' production experience, the UltraView structure is well-engineered and manufactured by our own CNC facilities and team of experts to ensure its ruggedness, mobility and quality, as well as being suitable for harsh environment applications. The structure can be customized if required to facilitate monitor installation. Our knowledgeable engineers are able to provide frame customization for specific dimensions, color, metal treatment, screen printing, bezel and mounting.

### Product Highlights



#### Key Benefits

- ▶ 1920 x 1080 native UHD resolution
- ▶ 1.07 billion colors ( 10-bit )
- ▶ DVI-D + VGA + HDMI 1.4 video input
- ▶ Display port video input ( option )
- ▶ Video decoding capability up to 1080p ( option )
- ▶ Rugged structure ensures high mobility
- ▶ IP65 front protection ( NAP series )
- ▶ Professional-use durability & around-the-clock operation
- ▶ 2-year standard warranty ( upgradable up to 5 years )

#### Applications

- Broadcasting / Advertising
- Traffic control / Command center
- Directory / Ticket kiosk
- Surveillance system
- Vehicle mount display
- Bathroom TV

#### Options

- DC power
- Touchscreen
- IP65 front protection
- Custom chassis & mounting
- Sunlight readable panel
- Auto-dimming
- HDMI decoder & extender
- 3G / HD / SD-SDI Input Module

**Standard Brightness**

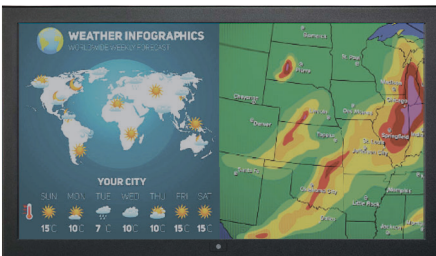
6mm aluminum front bezel



**AP-F55  
AP-F43  
AP-F32  
AP-F28**

\* AP-F55 applies 8mm bezel

6mm aluminum front bezel  
NEMA 4 / IP65 front protection



**NAP-F55  
NAP-F43  
NAP-F32  
NAP-F28**

\* NAP-F55 applies 8mm bezel

Aluminum front cover



**DP-F55  
DP-F43  
DP-F32  
DP-F28**

Universal open frame



**OP-F55  
OP-F43  
OP-F32  
OP-F28**

**1500 cd/m<sup>2</sup> Sunlight Readable Brightness**

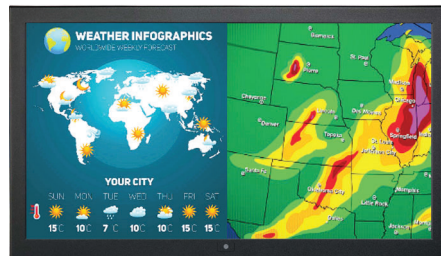
6mm aluminum front bezel



**HAP-F55  
HAP-F43  
HAP-F32**

\* HAP-F55 applies 8mm bezel

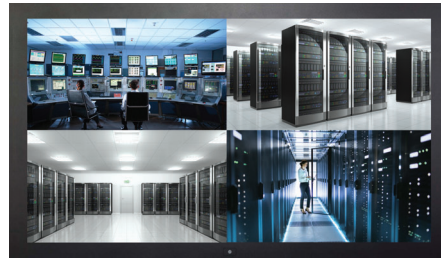
6mm aluminum front bezel  
NEMA 4 / IP65 front protection



**NHAP-F55  
NHAP-F43  
NHAP-F32**

\* NHAP-F55 applies 8mm bezel

Aluminum front cover



**HDP-F55  
HDP-F43  
HDP-F32**

Universal open frame



**HOP-F55  
HOP-F43  
HOP-F32**

**Chassis customization**

- ▶ Dimension
- ▶ Color & Treatment
- ▶ Screen Printing
- ▶ Stainless Steel Bezel

**Options — Touchscreen**

Touchscreen type	F55	F43	F32	F28
Infrared 10-point	✓	✓	✓	
Projected Capacitive 10-point	✓	✓	✓	✓
Anti-reflective Glass			✓	
Vandal Proof Glass			✓	

**Specification : Projected Capacitive 10-point Touch**

	TPC-10 Multi-touch
Technology	Projected Capacitive
Touch Point	10 point touch standard ( special requirement available )
Input Type	Finger or Capacitive Stylus
Resolution	4096 x 4096
Touch Point Accuracy	± 2 mm
Response Speed	< 5 ms
Activation Force	< 5 g
Surface Hardness	6H
Light Transmission	> 85%
Haze	3%↓
Durability	50 million touches
Top Layer	3 mm Glass
Bottom Layer	1.1 mm Sensor Glass
Thickness	4.3 ± 0.25 mm
Connector	USB
Compatibility	Windows / Linux / Android / Mac

**Part no. : TPC10**

- \* Not applicable to NAP series
- \*\* Dimension change required

**Specification : Infrared 10-point Touch**

	IR-10 Infrared
Technology	Infrared
Touch Point	10
Input Type	Pen, Finger, Finger of gloved hand activation
Touch Point Accuracy	± 2 mm
Response Speed	≤ 15 ms
Activation Force	No minimum touch activation force
Touch Durability	Unlimited
Glass Thickness	3 mm
Connector	A-type USB
Operating System	Windows 7 / Windows 10

**Part no. : IR10 ( for F55 / F43 / F32 )**

- \* Not applicable to AP & NAP series
- \*\* Dimension change required

**Options — DC Power**

		24V	48V	125V
Input rating	Input voltage	24-Volt	48-Volt	110-Volt
	Input range	18 ~ 36V	36 ~ 75V	66 ~ 160V
Input current	No load	50 mA	50 mA	40 mA
	Full load	4880 mA	2442 mA	993 mA
Output rating	Output voltage	24-Volt	24-Volt	24-Volt
	Output current	4.16A	4.16A	4.16A
Efficiency		88%	90%	92%

**Part no. : 24VDC  
48VDC  
125VDC**

Options — Video Management & Transmission over Network

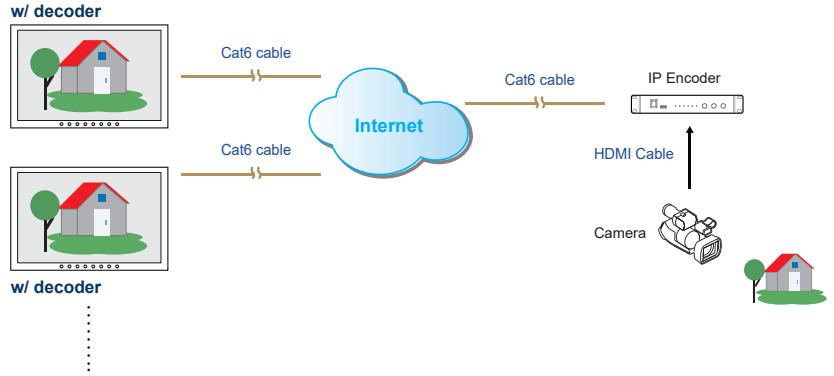
Embedded HDMI Decoder Module 1080p over IP

- Decodes RTSP, RTMP, UDP, HTTP, HLS protocols
- Supports video resolutions up to 1080p / 60Hz
- Unicast and multicast support
- Operates on standard 1000Mb Ethernet networks
- Built-in Web UI for configuration and control
- Excellent image quality with very low delay

Part no.

Embedded HDMI Decoder Module : **UV-DE100F**

Standalone HDMI Encoder : **UV-EN100F**



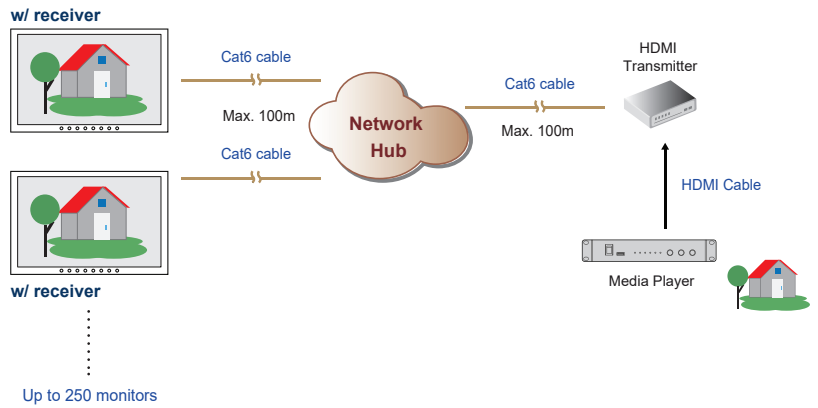
Embedded HDMI Receiver Module 1080p

- Extends the HDMI signal over a single Cat5/6 cable
- Supports video resolutions up to 1080p / 60Hz
- One to one just via Cat5/6 cable
- One to multi via network hub and Cat5/6 cable
- 100m maximum Cat5/6 cable distance
- Supports bi-directional IR communication
- High Speed HDMI 1.4 and HDCP 1.4 compliant
- No software or drivers required

Part no.

Embedded HDMI Receiver Module : **UV-R100F**

Standalone HDMI Transmitter : **UV-T100F**



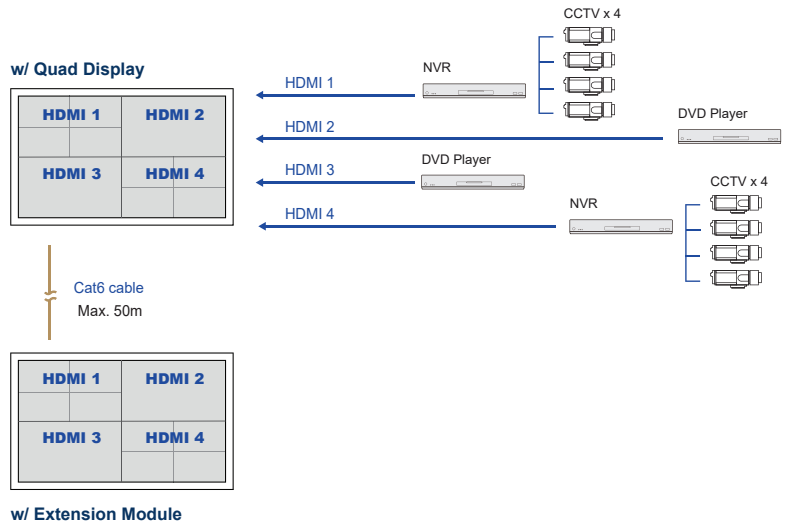
Embedded HDMI Quad Display Module 1080p

- Allows 4 x HDMI inputs to be monitored simultaneously
- Quad split, panel left and full screen monitoring modes
- High speed HDMI 1.4 and HDCP 1.4 compliant
- Supports video resolutions up to 1080p / 60Hz
- Supports Scaler Up and Down function
- Control via local front panel and IR remote

Part no.

Embedded HDMI Quad Display Module : **QD-1080**

Embedded Quad Display Extension Module : **QD-E1080**



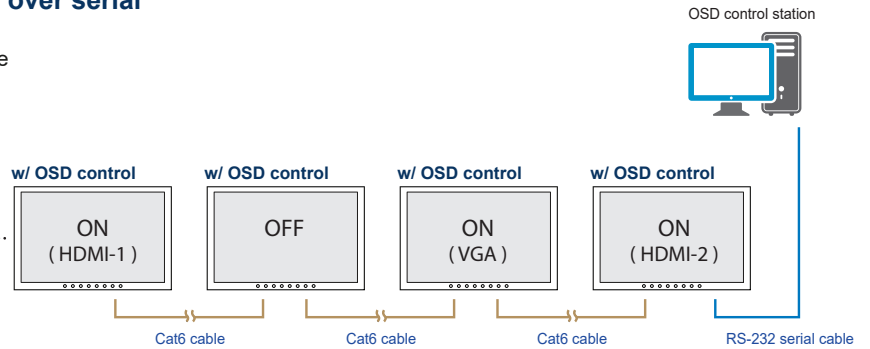


Options — Video Management & Transmission over Network

Embedded Multi Monitor OSD Control Module over serial

- Remote control the monitor OSD via RS-232C serial interface
- Daisy chain up to 64 monitors via Cat5/6 cable
- Individual ID for individual monitor OSD settings
- Power ON or OFF monitor
- Adjust brightness & audio
- Switch video sources

Up to 64 monitors  
Up to 1,000m distance



Part no.

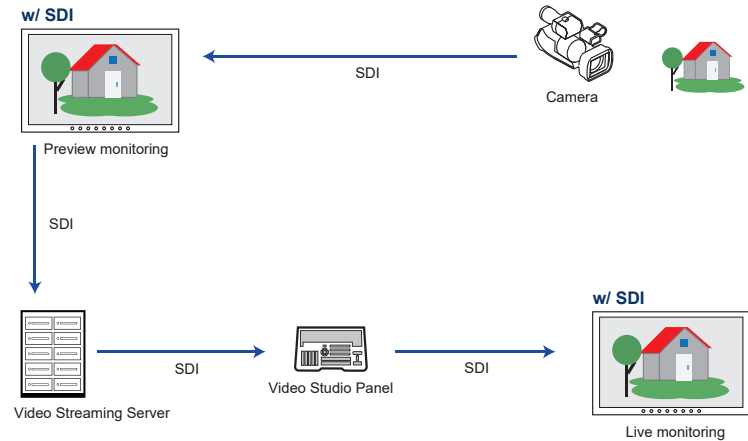
Embedded Multi Monitor OSD Control Module : **MCS**

Embedded 3G / HD / SD-SDI Input Module

- Intelligent SDI monitoring with broadcast quality scopes
- Supports multi-rate 3G / HD / SD-SDI format
- Provides input to output loop-through capability
- Auto format sensing & selection

Part no.

Embedded 3G / HD / SD-SDI Input Module : **SDI**



Embedded Portrait Mode Module

- Provides users with a rotation feature ( 0, 90, 180 & 270 orientation ) without frame delay via OSD
- Allows distortion-free display of content in various orientations
- Creates new application opportunities



w/ Portrait mode module

Part no.

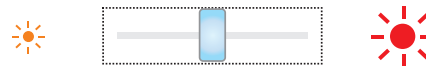
Embedded Portrait Mode Module : **AD4.0-P**

Embedded Auto Brightness Dimming Module

- Brightness changes according to its ambient brightness
- Its brightness change causes 10% increase or decrease

Part no.

Embedded Brightness Auto Dimming Module : **DA-01**



Embedded Manual Brightness Dimming Knob

- Easy-to-use IP54 dimming knob on the front panel
- One click causes 2% brightness increase or decrease
- Brightness adjustment from 0% to 100%

Part no.

Brightness Dimming Knob : **DS-01**

### Product Specifications

LCD Panel	F55	H-F55	F43	H-F43	F32	H-F32	F28
Panel size (diagonal)	55"		43"		31.5"		28"
Native resolution	1920 x 1080						
Brightness (cd/m <sup>2</sup> )	450	1500	350	1500	300	1500	300
Contrast ratio (typ.)	1200 : 1	4000 : 1	1000 : 1	1100 : 1	1000 : 1	3000 : 1	1000 : 1
Colors	1.07 Billion, 10-bit						
Viewing angle (L/R/U/D)	89/89/89/89						85/85/80/80
Response time (ms)	12		12		20		5
Dot pitch (mm)	0.315		0.2451		0.181		0.181
Display area (mm)	1209.60H x 680.4V		941.184H x 529.416V		698.4H x 392.85V		620.93H x 341.28V
Surface treatment	Anti-glare						
Surface hardness	2H				3H		
Backlight type	LED						
MTBF (hrs)	30,000		30,000	50,000	30,000	50,000	30,000

Mounting	F55	H-F55	F43	H-F43	F32	H-F32	F28
VESA mount (bundle)	600 x 400 mm		600 x 400 mm		300 x 300 mm		100 x 100 mm
Universal mount (ready)	OP only		OP only		OP only		OP only
Overhead tilted wall-mount (optional)	AP / NAP / DP		AP / NAP / DP		AP / NAP / DP		AP / NAP / DP
Desktop stand (optional)	AP / NAP / DP		AP / NAP / DP		AP / NAP / DP		AP / NAP / DP

Power	F55	H-F55	F43	H-F43	F32	H-F32	F28
Input	Auto-sensing 100 to 240VAC, 50 / 60Hz						
Max. Consumption :							
Screen on	100W	335W	68W	220W	56W	160W	52W
Saving mode	9W						
Button off	2W						

Design	AP	NAP	DP	OP
Protection	6mm / 8mm front bezel	NEMA 4 / IP65	Front cover	Open frame
Front panel	Black, RAL 9005			-
Rear casing	Black, RAL 9005			

Video	
VGA	Analog 0.7Vp-p
DVI	DVI-D single link
HDMI	HDMI 1.4 / HDCP 1.4

Video Option	
Display port	DP1.0 / HDCP 1.3

Audio	
Audio output :	
Connector	3.5mm stereo jack
Resistance / Power level	30kΩ / 2.8V
Speaker :	
Dual stereo speaker	10W x 2

DVI-D / VGA input
<b>PC signal :</b>
1920 x 1080 x 60Hz
1360 x 768 x 60Hz
1280 x 1024 x 60 / 75Hz
1280 x 960 x 60Hz
1280 x 768 x 60 / 75Hz
1152 x 864 x 75Hz
1024 x 768 x 60 / 70 / 75Hz
848 x 480 x 60Hz
800 x 600 x 60 / 72 / 75Hz
720 x 400 x 70Hz
640 x 480 x 60 / 72 / 75Hz
640 x 400 x 70Hz
640 x 350 x 70Hz
<b>Audio signal :</b>
2ch Linear PCM

HDMI input
<b>PC signal :</b>
Same as VGA
<b>HDMI 1.4 :</b>
1920 x 1080 x 50 / 60Hz
1920 x 1080 x 25 / 30Hz
1280 x 720 x 50 / 60Hz
720 x 480 x 50 / 60Hz
<b>Audio signal :</b>
2ch Linear PCM

Display port input
<b>PC signal :</b>
1920 x 1080 x 60Hz
1600 x 1200 x 60Hz
1360 x 768 x 60Hz
1280 x 768 x 60 / 75Hz
1280 x 768 x 60Hz
1024 x 768 x 60 / 70 / 75Hz
800 x 600 x 60 / 72 / 75Hz
720 x 400 x 70Hz
640 x 480 x 60 / 72 / 75Hz
<b>Audio signal :</b>
2ch Linear PCM

\* When the audio output is connected, speaker output is OFF

### Product Specifications

Environment	
Operating temp.	0 to 55°C degree
Storage temp.	-20 to 60°C degree
Operating humidity	20~90%, non-condensing
Storage humidity	5 ~90%, non-condensing
Operating altitude	16,000 ft
Non-operating altitude	40,000 ft
Shock	10G acceleration (11ms duration)
Vibration	10~300Hz 0.5G RMS random

Compliance	
EMC	FCC & CE certified
Safety	CE / LVD certified
Environment	RoHS2 & REACH compliant

### Physical Dimension & Weight

F55"		AP-F55	NAP-F55	DP-F55	OP-F55
Product (W x D x H) :	mm	1295 x 89.3 x 776		1269 x 83.1 x 750	1292 x 81.3 x 773
	inch	51 x 3.5 x 30.6		50 x 3.3 x 29.5	50.9 x 3.3 x 30.4
Net weight		40 kg / 88 lb	48.6 kg / 106.9 lb	37 kg / 81.4 lb	33 kg / 72.6 lb
Packing (W x D x H) :	mm	1455 x 212 x 917			
	inch	57.3 x 8.3 x 36.1			
Gross weight		50 kg / 110 lb	58.6 kg / 128.9 lb	47 kg / 103.4 lb	43 kg / 94.6 lb

F43"		AP-F43	NAP-F43	DP-F43	OP-F43
Product (W x D x H) :	mm	1025 x 82.8 x 619		999 x 76.8 x 593	1022 x 74.8 x 616
	inch	40.4 x 3.3 x 24.4		39.3 x 3 x 23.3	40.2 x 2.9 x 24.3
Net weight		31.7 kg / 69.7 lb	37.2 kg / 81.8 lb	29 kg / 63.8 lb	26.2 kg / 57.6 lb
Packing (W x D x H) :	mm	1122 x 199 x 712			
	inch	44.2 x 7.8 x 28			
Gross weight		37.5 kg / 82.5 lb	43 kg / 94.6 lb	34.8 kg / 76.6 lb	32 kg / 70.4 lb

F32"		AP-F32	NAP-F32	DP-F32	OP-F32
Product (W x D x H) :	mm	780 x 88.2 x 474		758 x 84.2 x 452	777 x 82.2 x 471
	inch	30.7 x 3.5 x 18.7		29.8 x 3.3 x 17.8	30.6 x 3.2 x 18.5
Net weight		20.9 kg / 46 lb	23.9 kg / 52.6 lb	18.7 kg / 41.1 lb	16.4 kg / 36.1 lb
Packing (W x D x H) :	mm	910 x 195 x 580			
	inch	35.8 x 7.7 x 22.8			
Gross weight		25.7 kg / 56.5 lb	28.7 kg / 63.14 lb	23.5 kg / 51.7 lb	21.2 kg / 46.6 lb

F28"		AP-F28	NAP-F28	DP-F28	OP-F28
Product (W x D x H) :	mm	703.9 x 71 x 424.5		681.9 x 67 x 402.5	700.9 x 65 x 421.5
	inch	27.7 x 2.8 x 16.7		26.8 x 2.6 x 15.8	27.6 x 2.6 x 16.6
Net weight		16.8 kg / 37 lb	18.6 kg / 40.9 lb	14.8 kg / 32.6 lb	12.7 kg / 27.9 lb
Packing (W x D x H) :	mm	785 x 175 x 527			
	inch	30.9 x 6.9 x 20.7			
Gross weight		20.4 kg / 44.9 lb	22.2 kg / 48.8 lb	18.4 kg / 40.5 lb	16.3 kg / 35.9 lb

\* All dimensions stated are subject to change if options are selected / integrated to base model part codes

## UltraView Family

UltraView series covers a full range of professional LCD display sizes from 6.5" to 55". Please select from the below the most suitable model for your application.

### Sales Inquiry

[inquiry@austin-hughes.com](mailto:inquiry@austin-hughes.com)

### Technical Support

[support@austin-hughes.com](mailto:support@austin-hughes.com)

4K	FHD	FHD 144Hz	WXUGA ( 1920 x 1200 )	Regular
● K55"	● F55"	● MF17"	● X24"	● W19" ( 1440 x 900 )
● K43"	● F43"	● MF27"	● X17"	● 20" ( 1600 x 1200 )
● K32"	● F32"			● 19" ( 1280 x 1024 )
● K28"	● F28"			● 17" ( 1280 x 1024 )
● K23"	● F23"			● 15" ( 1024 x 768 )
● K17"	● F21"			● 12" ( 800 x 600 )
● K15"	● F17"			● 10" ( 800 x 600 )
● K13"	● F15"			● 8" ( 800 x 600 )
	● F13"			● 6" ( 640 x 480 )

## High Brightness

4K	FHD	Regular
● K55"	● F55"	● W19" ( 1440 x 900 )
● K43"	● F43"	● 19" ( 1280 x 1024 )
	● F32"	● 17" ( 1280 x 1024 )
	● F21"	
	● F17"	
	● F15"	

## Sunlight Readable Brightness

### Americas

Austin Hughes Solutions Inc.  
32900 Alvarado-Niles Rd, Suite 150  
Union City, CA 94587  
United States

[inquiry@austin-hughes.com](mailto:inquiry@austin-hughes.com)

### EMEA

Austin Hughes Europe Ltd.  
Unit 1, Chancery Gate Business Centre  
Manor House Avenue  
Southampton, SO15 0AE  
United Kingdom

[info@austin-hughes.eu](mailto:info@austin-hughes.eu)

### APAC

Austin Hughes Electronics Ltd.  
Unit 3608-12, Cable TV Tower  
9 Hoi Shing Road, Tsuen Wan  
Hong Kong

[inquiry@austin-hughes.com](mailto:inquiry@austin-hughes.com)

### ASEAN

Austin Hughes Pte. Ltd.  
3 Ang Mo Kio Street 62  
#07-03 Link@AMK  
Singapore 569139

[inquiry@austin-hughes.com](mailto:inquiry@austin-hughes.com)

Austin Hughes has an extensive distribution network, including the Americas, EMEA, APAC & ASEAN. Contact your nearest sales office for details of local representation.

Please ask for details of other products from Austin Hughes. Every effort has been made to ensure that the information contained herein is correct. There is a possibility that the image(s) shown may not be exactly the same as the final product. The company reserves the right to modify product specifications without prior notice and assumes no responsibility for any error which may appear in this publication.

All brand names, logo and registered trademarks are properties of their respective owners. Copyright 2020 Austin Hughes Electronics Ltd. All rights reserved.

Distributed by:

Distributor by country on application